

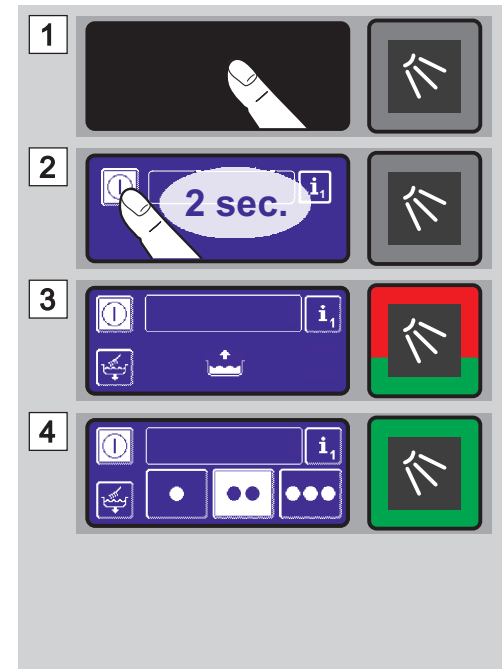
## UF-serie



### Vóór het inschakelen



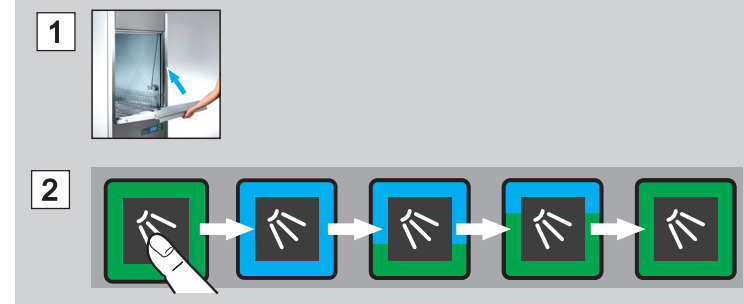
### Inschakelen



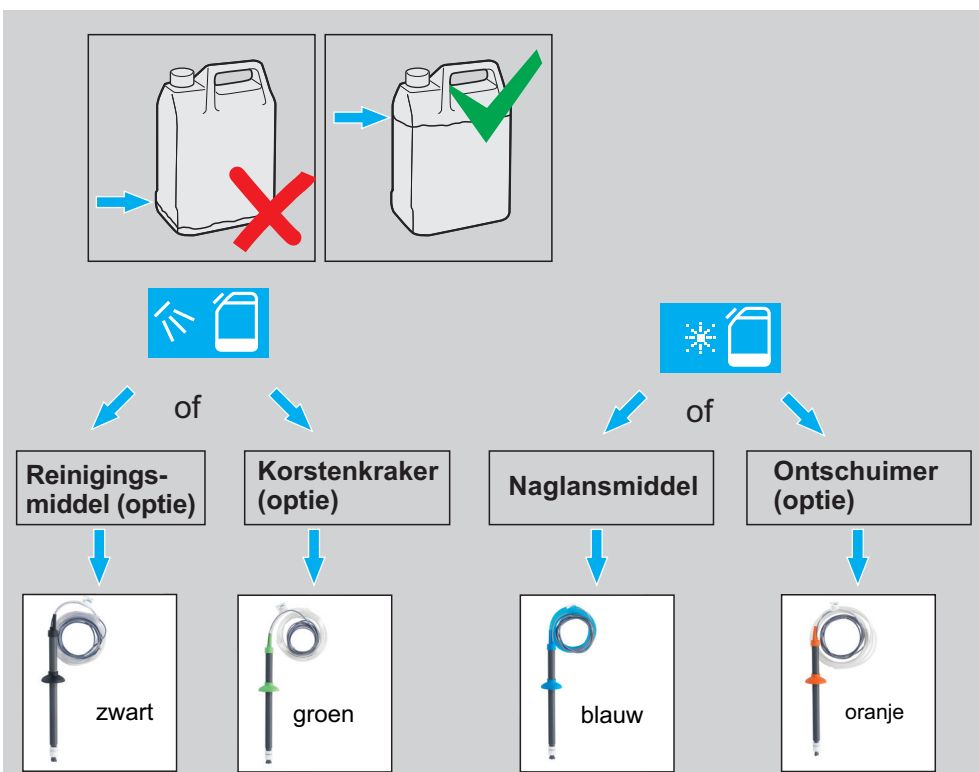
### Vaatwerk in de vaatwaskorf plaatsen



### Wassen



### Reservoirs vervangen

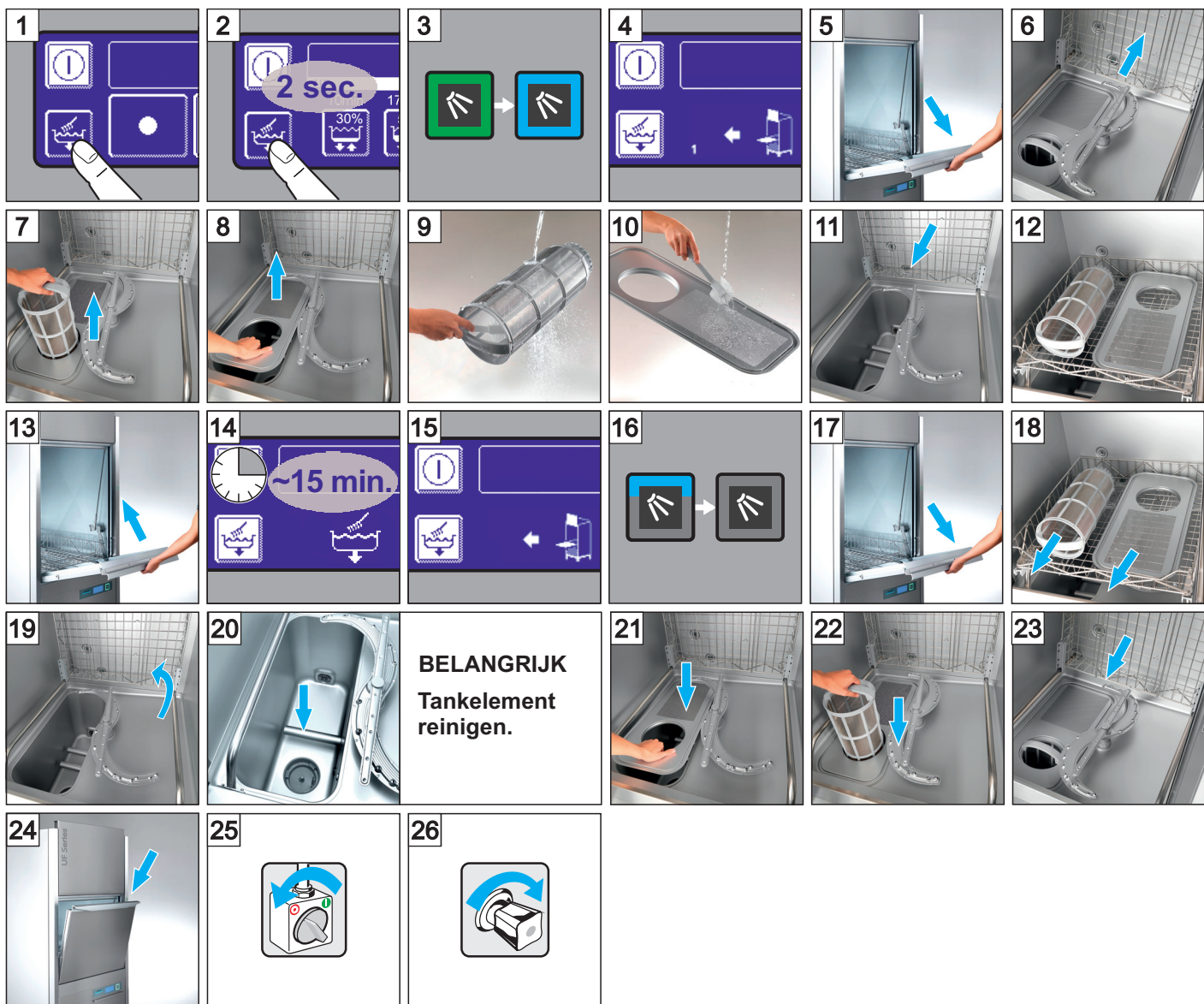


Meer informatie:  
Zie gebruiksaanwijzing  
[www.winterhalter.biz/manuals](http://www.winterhalter.biz/manuals)

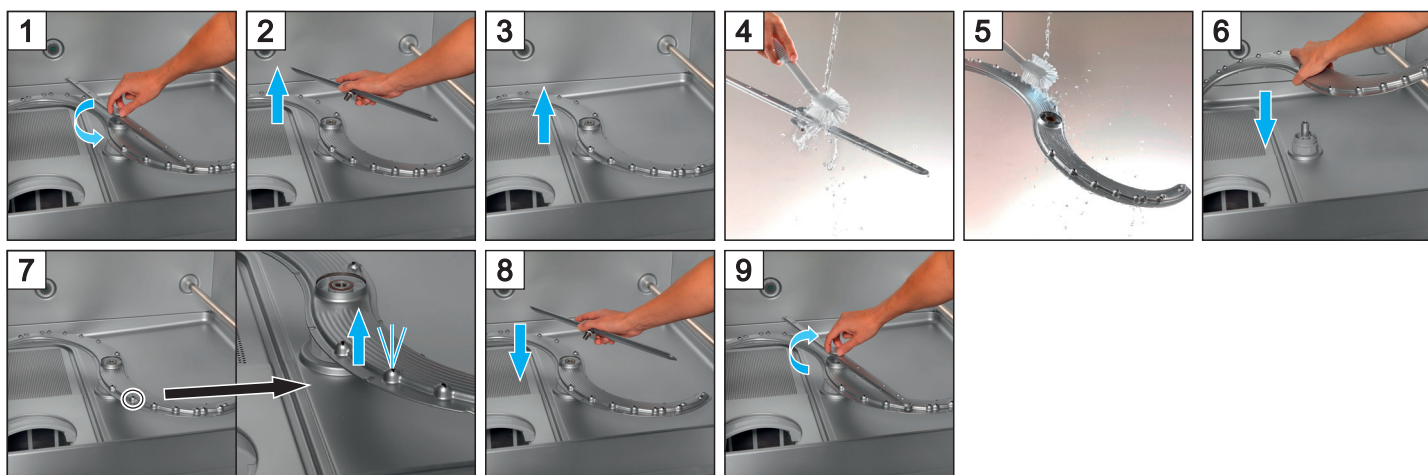


**Winterhalter Gastronomie  
Nederland B.V.**  
Professionele vaatwassersystemen  
Ericssonstraat 32  
5121 ML Rijen  
Telefoon : (+31)161-220520  
Fax : (+31)161-220530  
info@winterhalter.nl  
www.winterhalter.nl

## Machine uitschakelen + reinigen



## Wasarmen reinigen



## Deur neerklappen (optie)

